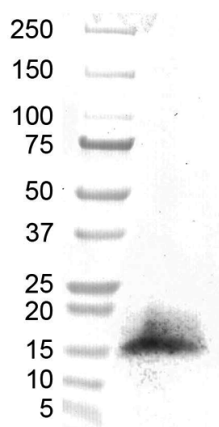


DATASHEET

Rhizopus arrhizus, mouse monoclonal antibody [clone KC9]

Product code	ID2615-0025 / ID2615-0100
Unit size	25µL / 100µL
Concentration	See batch specific Certificate of Analysis
Alternative name	No
Accession no.	No
Host	Mouse
Immunogen	<i>Rhizopus arrhizus</i> extracellular polysaccharide (EPS)
Isotype	IgG1
Purification	Protein A
Applications	ELISA, WB
Recommended dilution	1:1000
Optimisation	Optimal dilutions to be determined by end user
Known reactivity	<i>Rhizopus arrhizus</i> var. <i>arrhizus</i> (formerly <i>Rhizopus oryzae</i>) and <i>Rhizopus arrhizus</i> var. <i>delemar</i> (<i>R. delemar</i>). Does not cross-react with other mucorales fungi.
Storage buffer	Phosphate buffered saline pH7.2 with 0.095% (w/v) sodium azide
Shipping	Blue ice
Storage temperature	Store as supplied at +2°C ~ +8°C for up to 1 year
Reference	Davies GE, Thornton CR. (2022). Development of a Monoclonal Antibody and a Serodiagnostic Lateral-Flow Device Specific to <i>Rhizopus arrhizus</i> (Syn. <i>R. oryzae</i>), the Principal Global Agent of Mucormycosis in Humans. <i>Journal of Fungi</i> 8 : 756.

M_r [kDa]



Legend: Western blot of extracellular polysaccharide (EPS) from *Rhizopus arrhizus* var. *arrhizus*. The antigen was separated by denaturing SDS-PAGE, transferred electrophoretically onto PVDF membrane, and probed with KC9-alkaline phosphate conjugate. The mAb reacts with a single immuno-reactive band with a molecular weight of ~15 kDa.

UNLESS OTHERWISE STATED IN OUR CATALOG OR OTHER COMPANY DOCUMENTATION ACCOMPANYING THE PRODUCT(S), OUR PRODUCTS ARE INTENDED FOR **RESEARCH USE ONLY** (RUO) AND ARE NOT TO BE USED FOR ANY OTHER PURPOSE, WHICH INCLUDES, BUT IS NOT LIMITED TO, UNAUTHORISED COMMERCIAL USES, *IN VITRO* DIAGNOSTIC USES, *EX VIVO* OR *IN VIVO* THERAPEUTIC USES OR ANY TYPE OF CONSUMPTION OR APPLICATION TO HUMANS OR ANIMALS.